

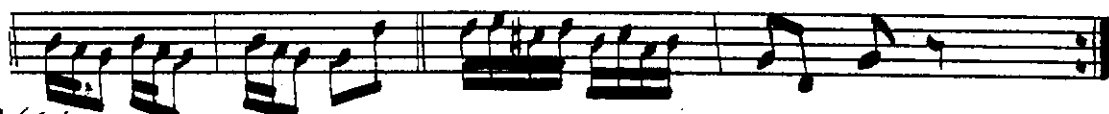
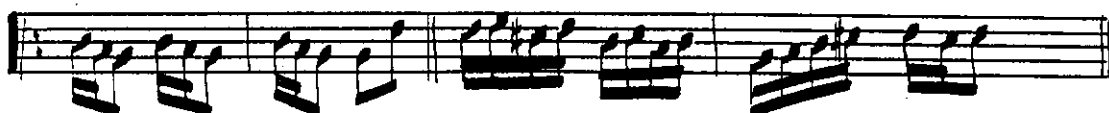
Beste Larihi
1. 1. 1926

Nikziz - Langa

ESANO: 23

(1. mei hane)

ndi: Sadi Landa



f (Tesslin)



(2. mei hane)



(3. mei hane)



A handwritten musical score on ten staves. The notation is in a staff with a treble clef and a key signature of one sharp (F#). The music consists of a series of eighth and sixteenth notes, often beamed together in groups. There are several measures with rests, some marked with a '2' and a dash, indicating a two-measure rest. The score is divided into sections by double bar lines. The first section ends with a double bar line and a fermata. The second section begins with a double bar line and a fermata. The third section begins with a double bar line and a fermata. The fourth section begins with a double bar line and a fermata. The fifth section begins with a double bar line and a fermata. The sixth section begins with a double bar line and a fermata. The seventh section begins with a double bar line and a fermata. The eighth section begins with a double bar line and a fermata. The ninth section begins with a double bar line and a fermata. The tenth section begins with a double bar line and a fermata. The score is signed 'A. ceki' at the bottom left and 'F. ceki' at the bottom right, with the date '21.2.1957' written below the signature.

(4. mii hane)

A. ceki

F. ceki

21.2.1957

Cüneyt KOSAL